



**SC Filtration**  
[www.sambocreek.com](http://www.sambocreek.com)



# Solventless Mesclatore



**FDA**  
compliant



**MAKE 6 ★ HASH  
AT SCALE!**





# Solventless Hash

Most methods of extractions require the use of solvents. The process works well, but there are a few problems with it; A contaminated product will result if the manufacturer fails to outgas all hydrocarbons from the solvent in the final stage of manufacturing.

No solvents are needed for hash - all you need is the ice-cold temperature water to extract it.



# What would you use Hash for?

You can make different types of products:



Dabs



Infused Pre-Rolls



Full Melt



Edibles



Vapes



Cold Cure



Sauce



Tincture



Fresh Press

Your imagination is the limit.

# What is the economic case for this manufacturing method?



You don't use chemicals



Solventless products are sold at better prices



You invest less in equipment



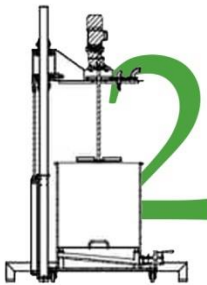
Less paperwork with licenses and permits



You can make almost any product

# How is Hash made?

*Starting material can be flower, trim, dry or Fresh Frozen.*



*Place flower and cold water in the bin and wash in Mesclatore.*

*Filter to sort by size.*



*Freeze dry.*

*That's it! You've made your own bubble hash.  
Congratulations!*



# Solventless Mesclatore

Sambo Creeck's Solventless Mesclatore is the most recent advancement in solventless processing technology, allowing hash producers to significantly increase the efficiency and performance of their hash washing process.

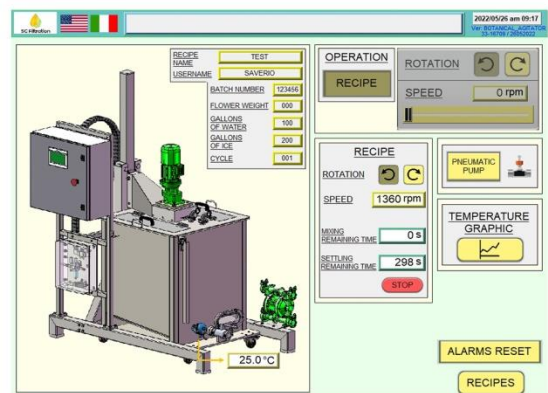
## Wash faster, wash more

The Mesclatore is a turnkey industrial solventless solution, with swappable trolleys. It is ideal for agitation of biomass for production of solventless ice water extracts. Our Solventless solution will automate and expand your lab's production. This modular system lets you swap trolleys to quickly process serious volumes.



## Adjustable to your needs

The PLC-controlled system lets you create programs tailored to your needs to produce the quality you desire. You can agitate as gentle or as aggressive as you require, and adjust to any batch size





## Easy to use

To operate, place flower and cold water in the bin, and start your program. After completion, you can gravity drain or use the included pump to transfer to filtration and sieving.



## FDA Compliant

Our Mescolatore meets FDA standards and is made of food grade polypropylene.



## Removable False Bottom

During the washing process, a removable stainless steel false bottom protects your trichomes while keeping your flower and work bags above your hash. The sloped bottom design prevents trichomes from further agitation and promotes their accumulation on a central channel for easy cleanup.





## No Insulated Sleeve Required

The Solventless Mesclatore is thermally insulated, reducing ice usage by up to 85% without the need for an external chiller. It keeps a temperature of 32 degrees Fahrenheit for a longer period. This machine is tough, durable, and reliable. PP is impervious to most acids and solvents, allowing you to aggressively sanitize.



## Save time and Money

Return on equipment investment within 1 day at 3% yield using 4 trolleys.

***Fresh Frozen per day***  
528lbs/240kg

***Volume per wash***  
20kg

***Yield range per day***  
7,200g – 14,400g

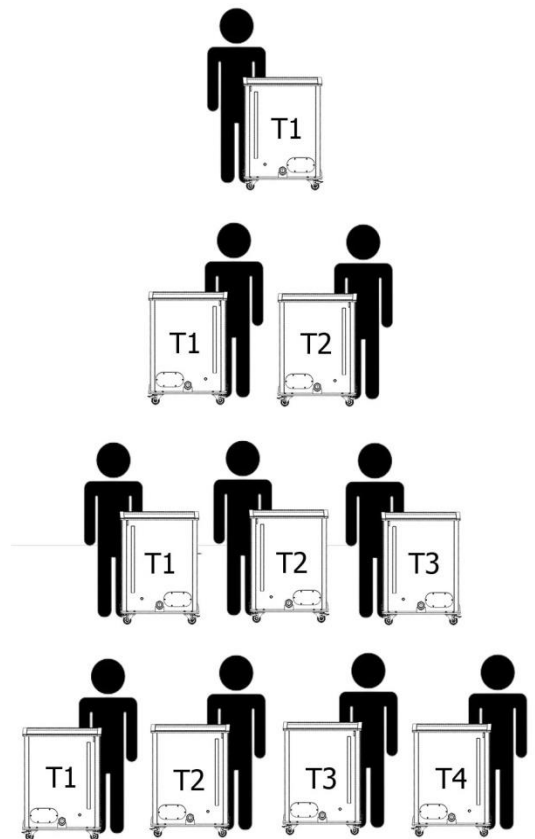
***Price per Gram***  
\$30.00

***Revenue per day***  
\$216,000 – \$432,000

# Optimum Setup Analysis

Using 1 mixer and 4 trolleys

Time	Minutes	Soak	Agitate	Settle	Filter	Clean
9:00 AM	15	T1				
	30	T1,T2				
	45	T2,T3	T1			
	60	T3	T2	T1		
	15		T3	T2	T1	
10:00 AM	30		T1	T3	T2	
	45	T4	T2	T1	T3	
	60	T4	T3	T2	T1	
	15		T4	T3	T2	T1
	30	T1		T4	T3	T2
11:00 AM	45	T1			T4	T3
	60	T2	T1			
	15	T2	T4	T1		
	30	T3	T2	T4	T1	
	45	T3	T1	T2	T4	
12:00 AM	60		T3	T1	T2	T4
	15	T4	T2	T3	T1	
	30	T4	T2	T2	T3	T1
	45	T1	T4	T1	T2	
	60	T1	T3	T4	T3	T2
13:00 PM	15	T2	T1	T4	T4	T2
	30	T2	T4	T3	T4	
	45	T2	T2	T4	T1	T3
	60	T3	T1	T2	T4	
	15	T3	T1	T1	T2	T4
14:00 PM	30	T4	T2	T1	T1	
	45	T4	T3	T2		T1
	60		T4	T3	T2	
	15		T3	T4	T3	T2
	30		T3	T4	T4	
15:00 PM	45		T4	T3		
	60		T4	T3	T2	
	15			T4	T3	T2
	30		T3		T4	
	45		T4		T3	
16:00 PM	60		T4	T3	T3	
	15			T4	T4	T3
	30					T4
	45					
	60					
17:00 PM	15					
	30					
	45					
	60					



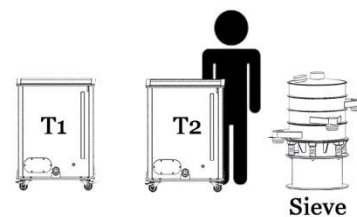
Cleanouts:	12
Kg per shift:	240
Agitations per batch:	2
Impeller usage:	75%
Total grams of Hash produced at 3% yield	7,200

\* Configuration of the Mesclatore using 4 trolleys, 1 mixer during an 8hrs. Shift.

# Optimum Setup Analysis

Using 1 mixer, 2 trolleys and a sieve

Time	Minutes	Soak	Agitate	Settle	Filter	Clean
9:00 AM	15	T1	T1		T1	
	30					
	45					
	60					
10:00 AM	15	T2	T2		T2	T1
	30					
	45					
	60					
11:00 AM	15	T1	T1		T1	T2
	30					
	45					
	60					
12:00 AM	15	T2	T2		T2	T1
	30					
	45					
	60					
13:00 PM	15	T1	T1		T1	T2
	30					
	45					
	60					
14:00 PM	15	T2	T2		T2	T1
	30					
	45					
	60					
15:00 PM	15	T1	T1		T1	T2
	30					
	45					
	60					
16:00 PM	15	T2	T2		T2	T1
	30					
	45					
	60					
17:00 PM	15	T1	T1		T1	T2
	30					
	45					
	60					



Cleanouts:	7
Kg per shift:	140
Agitations per batch:	1
Impeller usage:	100%
Total grams of Hash produced at 3% yield	4,200

\* Configuration of the Mesclatore using 2 trolleys, 1 mixer and 1 sieve.  
during an 8hrs. shift.

# Work Bags

Increase the efficiency and wash volume of your Solventless Mesclatore System!

## FDA Compliant

For maximum durability, they are made of superior food grade nylon mesh and canvas.

## Zipper Bottom

Our bags have a zipper at the bottom. This allows for fast emptying of the bag when hoisted

## Lift Straps

Each work bag also comes with lift straps rated up to a 200lb. max load capacity.

## Size

The work bags are rod-reinforced, custom-made to accommodate the tank size, optimizing capacity.





# Pumps

We partnered with two of the top pump manufacturers in Italy and through extensive R&D developed a unique pump engineered to pump trichomes. Our pump is the perfect solution, eliminating the need to gravity drain tanks.

## Features

- » Reduces shear, and cavitation
- » Handles large volumes of hash water without damaging the pump
- » Tolerances, material selection, balls, gaskets and geometry were all designed to delicately handle trichomes.
- » FDA Food Grade
- » Self-priming AODD pumps that are easy to operate and control flow
- » Can be fully submerged in water without the risk of pump damage.



# Solventless KPIs

## Hand Wash

BIOMASS QUALITY	LIVE (Fresh Frozen)	CURED (Dry)
Runs in 2 Shifts	3	2
Input Grams per Run	25,000	12,000
Average Yield (%)	3.5%	8%
Average Yield (g)	875	960
Appx Value/g (\$)	\$ 20	\$ 8
Appx Value/run (\$)	\$ 17,500	\$ 7,680
Staffing/Run	3	3
Total Yield per Day in Grams	2,625	1,920
Total Value per Day	\$ 52,500	\$ 15,360

STAFFING KPI	RATE (\$)	# OF STAFF
Lead	\$ 22	1
Technician	\$ 18.50	2
Total Labor/Run (\$)	\$ 272	\$ 408
Total Labor per Day (\$)	\$ 816	\$ 816
Labor per Gram	\$ 0.311	\$ 0.425

## Mesclatore with 1 Trolley

### BIOMASS QUALITY

	LIVE (Fresh Frozen)	CURED (Dry)
Runs in 2 Shifts	3	2
Input Grams per Run	20,000	10,000
Average Yield (%)	5%	10%
Average Yield (g)	1,000	1,000
Appx Value/g (\$)	\$ 20	\$ 8
Appx Value/run (\$)	\$ 20,000	\$ 8,000
Staffing/Run	2	2
Total Yield per Day in Grams	3,000	2,000
Total Value per Day	\$ 60,000	\$ 16,000

### STAFFING KPI

	RATE (\$)	# OF STAFF
Lead	\$ 22	1
Technician	\$ 18.50	1
Total Labor/Run (\$)	\$ 184	\$ 276
Total Labor per Day (\$)	\$ 552	\$ 552
Labor per Gram	\$ 0.184	\$ 0.276
Savings Per day over Hand Washing	\$ 380.57	\$ 298
<i>*Days for savings to pay for equipment.</i>	112	143

*\*Calculated by difference in cost per gram produced.*

## Mesclatore with 4 Trolleys

### BIOMASS QUALITY

Runs in 2 Shifts  
 Input Grams per Run  
 Average Yield (%)  
 Average Yield (g)  
 Appx Value/g (\$)  
 Appx Value/run (\$)  
 Staffing/Run  
 Total Yield per Day in Grams  
 Total Value per Day

### LIVE (Fresh Frozen)

### CURED (Dry)

	20	16
	20,000	10,000
	5%	10%
	1,000	1,000
\$	20	\$ 8
\$	20,000	\$ 8,000
	4	4
	20,000	16,000
\$	400,000	\$ 128,000

### STAFFING KPI

Lead  
 Technician  
 Total Labor/Run (\$)  
 Total Labor per Day (\$)  
 Labor per Gram  
 Savings Per day over Hand Washing

### RATE (\$)

### # OF STAFF

\$	18	1
\$	16.50	3
\$	54	\$ 67.50
\$	1,080	\$ 1,080
\$	0.054	\$ 0.068
\$	5,137.14	\$ 5,720
	13	12

*\*Days for savings to pay for equipment.*

*\*Calculated by difference in cost per gram produced.*



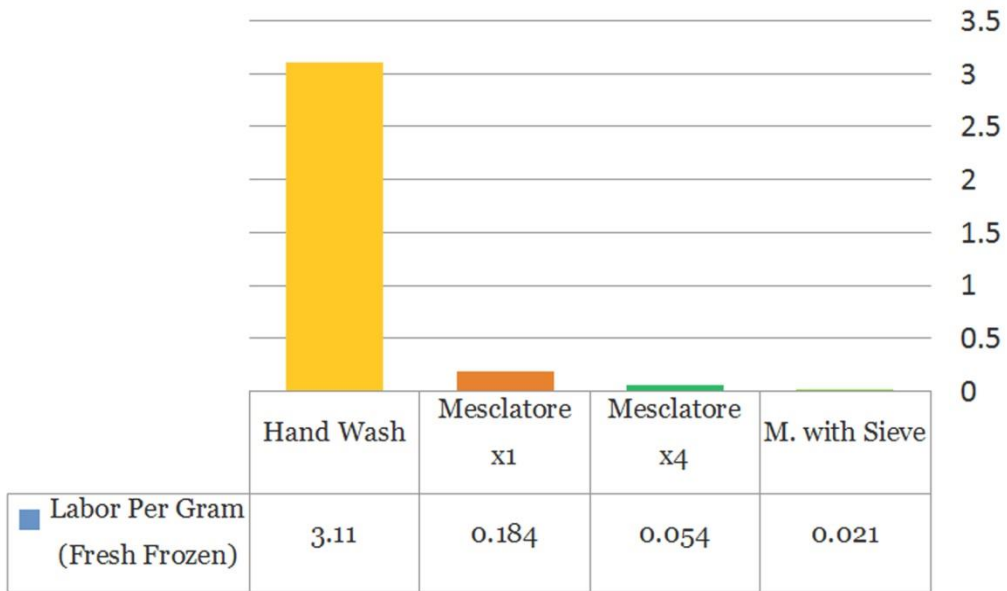
## Mesclatore with 2 Trolleys and a Sieve

BIOMASS QUALITY	LIVE (Fresh Frozen)	CURED (Dry)
Runs in 2 Shifts	20	16
Input Grams per Run	20,000	10,000
Average Yield (%)	5%	10%
Average Yield (g)	1,000	1,000
Appx Value/g (\$)	\$ 20	\$ 8
Appx Value/run (\$)	\$ 20,000	\$ 8,000
Staffing/Run	4	4
Total Yield per Day in Grams	20,000	16
Total Value per Day	\$ 400,000	\$ 128,000

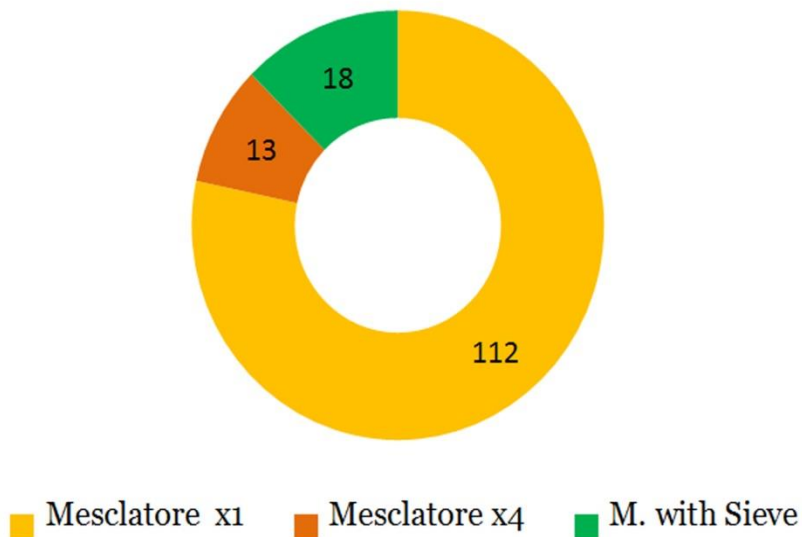
STAFFING KPI	RATE (\$)	# OF STAFF
Lead	\$ 22	1
Technician	\$ 16.50	---
Total Labor/Run (\$)	\$ 18	\$ 18
Total Labor per Day (\$)	\$ 288	\$ 288
Labor per Gram	\$ 0.021	\$ 0.022
Savings Per day over Hand Washing	\$ 4,064	\$ 5,237
<i>*Days for savings to pay for equipment.</i>	17	---

*\*Calculated by difference in cost per gram produced.*

### Labor Per Gram

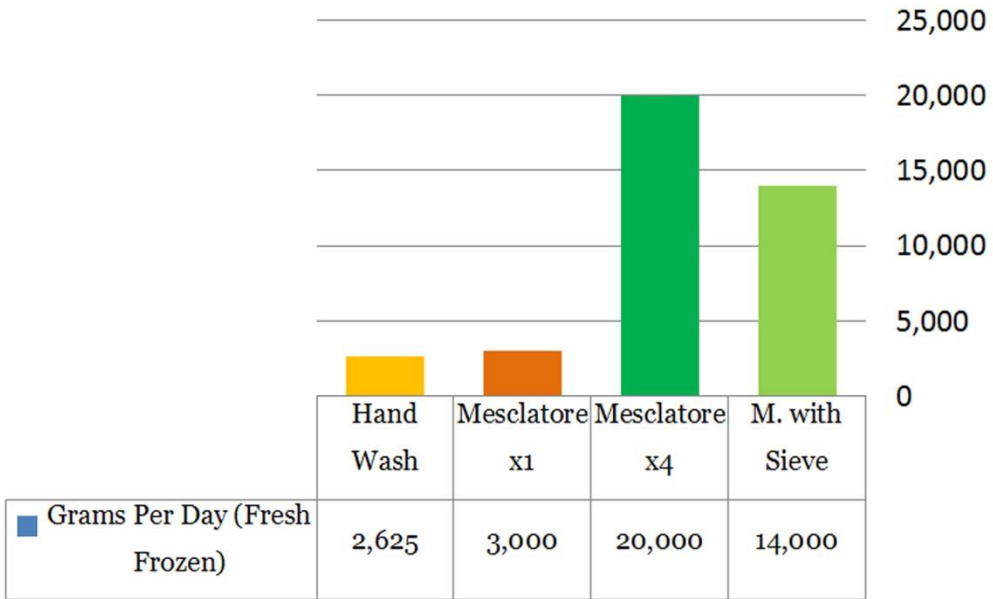


### Payback Days

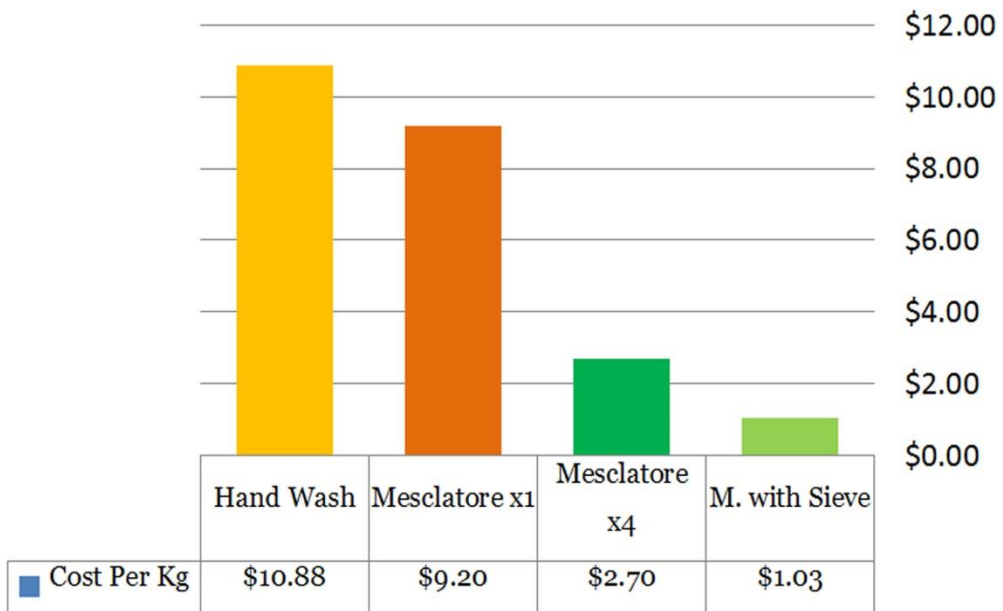


\*Days for savings to pay for equipment

### Grams Produced Per Day



### Labor Cost Per Kg Processed



# Drawings

